

***Killinarden Drug Primary Prevention Group
KDPPG
&
Women Reviewing Equality Networking
Standards
WRENS
Annual Report
2012***



Table of Contents

- Introduction
- Background
- Guiding Principles
- Project Aims
- Board of Directors/ Management Committee
- Staffing
- Work Area 1: Young Peoples Programmes
- Work Area 2: Family Support and Adult Programmes
- Work Area 3: Networking & Interagency Work
- Work Area 4: Organisational development and training
- KDPPG Funding
- WRENS Funding
- KDPPG Total Number of Participants 2012
- WRENS Number of Participants 2012
- Conclusion

Introduction

2012 was a very challenging year for KDPPG and WRENS due to sever funding cuts to the KDPPG Project. The project produced a one year strategic plan; the work programme set a number of targets and goals for the project in relation to the organisations main working area's in order to ensure that satisfactory progress was being made in the achievement of the various targets and goals.

The annual review for 2012 involved two main actions:

- (1) The regular updating of a form which detailed all the individual actions to be delivered in 2012.
- (2) Facilitated meetings of staff and facilitators. Facilitators meetings between the young people's programme, probation & WRENS Project & managers & board.

All of these reviews and evaluation activities have combined to provide a fairly comprehensive picture of the extent to which the 2012 work programme was being implemented in an effective manner.

The following annual report details the work of KDPPG and WRENS for the year 2012

- Work Area 1: Young Peoples Programmes
- Work Area 2: Women's Programme and Family Support
- Work Area 3: Networking & Interagency Work
- Work Area 4: Organisational development and training

Background

K.D.P.P.G has been operational in the Killinarden area of west Tallaght since September 1993. It was set up by the Home School Liaison teachers and parents from the community, worried about the lack of education and the misinformation that existed around the drugs issues/problems. The group were particularly concerned about the information and awareness needs of young people in relation to drugs and alcohol. The lack of knowledge was evident around different types of drugs, effects and consequences of drug abuse and addiction. A needs analysis was carried out in local Schools in the Killinarden area. In this context it was considered necessary and appropriate to set up a local Drug Primary Prevention Group to network with Schools in delivering community S.P.H.E (Social Personal Health Education) Programmes.

In 2002 KDPPG made a successful application to the Probation and Welfare Services for “Women Reviewing Equality Networking Standards” (WRENS). This project aims to develop a range of activities and services for women in the Tallaght area who are affected by their own or family members anti social or criminal behaviour, with a view to breaking the cycle of such behaviour. This project is fully integrated into the work of KDPPG.

Guiding Principles

- The KDPPG/WRENS believes that local residents living in the Tallaght area have an important and significant role to play in drugs education and drugs prevention work within the local area.
- The KDPPG/WRENS is committed to the process of empowering and enabling local people through the provision of education, training, employment, facilitation, counselling and keyworking opportunities.
- The KDPPG/WRENS recognises the need for a multi-dimensional and integrated approach towards the drugs issue and anti social behaviour, an approach which requires the participation of a number of different organisations and agencies working together in pursuit of common goals.
- The KDPPG/WRENS believes that there is a clear link between high self esteem and healthy lifestyles (especially in relation to alcohol and drugs and anti social behaviour) and will continue to give equal priority to self esteem activities and to drugs awareness /education activities.
- The KDPPG/WRENS strives to maintain the highest standards of care and professionalism in the ways in which it manages its affairs and in the service / supports it provides to local people living in Tallaght.
- The KDPPG/WRENS is aware of the need for constantly reviewing and evaluating it's main priorities and work focuses as new challenges emerge within the drugs & criminal justice area and as agencies and organisations develop new responses to the drugs and alcohol problem (which might effect the existing policies of the KDPPG/WRENS)

- The KDPPG/WRENS recognises the importance and the benefits of providing support to families within our community who have been affected by the many problems relating to alcohol, drugs & anti social behaviour.
- The KDPPG/WRENS believes that it has a significant contribution to make in tackling the drugs issue in Tallaght due to the experiences, skills and the knowledge, which have been accumulated by the group members since the formation of KDPPG in 1993.

Project Aims:

- To enhance the work of the probation service
- To address offending behaviour
- To provide appropriate information referrals
- To provide high quality drug/alcohol education and awareness
- To network with relevant local agencies
- To create self belief and hope for a better tomorrow
- To support and encourage people affected by self harm or suicide

Board of Directors and Management Committee up to December 2012.

Maria O Donoghue, Women Together Tallaght Network	BOD
Gerry Hegarty, Board Member	BOD
Charlie O'Connor, Retired T.D.	BOD
Sinead Greaney, KDPPG, Secretary	M
Robert O'Leary, Principal Sacred Heart Primary School	M
James Mulhare, HSL Teacher Killinarden Community School	M
Liam Mc Laughlin, Co – ordinator of the SCP	M
Berne O'Brien, Community Rep	M
Alice Murray KDPPG Manger	M
Lena Timoney, Senior Probation Officer	M
Marjo Moone, Board Member	M

Finance Sub Groups:

Gerry Hegarty, Board Member
Maria O Donoghue, Women Together Tallaght Network
Sinead Mahon, Administrator and Facilitator in KDPPG/WRENS
Alice Murray, KDPPG/WRENS Manager

Professional Sub Groups:

Marjo Moone, Board Member
Gerry Hegarty, Board Member
Maria O Donoghue, Women Together Tallaght Network
Berne O'Brien, Community Rep
Alice Murray, KDPPG/WRENS Manager

Staff

Manager: Alice Murray

Project Workers: Margaret Murray
Mandy Scully

Administrator: Sinead Mahon

Facilitators: Sinead Mahon, Lorraine Brown, Sheila O'Brien

Work Area 1: Young Peoples Programmes

The KDPPG school programmes have been operational in Killinarden Schools since 1994. Over a period of time the Programmes have extended, to other Schools within the Tallaght area. KDPPG programmes are now part of the SPHE School curriculum within our Schools. The success of the programmes is a result of a partnership approach with KDPPG/WRENS Principals / teachers within local Schools. The partnership has become stronger over the years which has resulted in the effective completion of the programmes within the Schools. The project has also facilitated information stands and talks in Schools. KDPPG programmes are evaluated internally annually.

The following outlines the aims and programme content, School programmes completed and information stands/ talks which KDPPG facilitated in local schools in 2012:

5th Class Community Awareness & Life Skill Programme (students aged 8-10): This programme aims to link in with SPHE curriculum within schools to build a better awareness. The programme aims to build self-confidence by teaching assertive behaviour, to create self-belief and hope for a better community, it provides information in relation to clubs and activities within the community and it aims to help young people explore feelings and develop healthy attitudes.

6th Class Drug Awareness Programme (students aged 11-12): aims to build up awareness and understanding about different types of drugs (nicotine, alcohol and illicit drugs) and to outline the impact and the consequences of various drugs. The Drugs Awareness Programme begins in fifth and sixth class in primary School. KDPPG are conscious of the dangers of providing information about cigarettes, alcohol, solvents and illegal drugs at too early an age. Hence, the sequential nature of the various programmes -with the Self Esteem Programme taking place in fifth classes and the Drugs Awareness Programme, taking place in sixth classes.

Sacred Heart Primary

6th Class Drug Awareness was successfully completed. It was delivered one day a week, for one hour, over a six week period. Started 20th of November 2012.

Number of facilitators: 3

Number of Students: 75

5th Class Community Awareness & Life Skill Programme was successfully completed. It was delivered one day a week, for one hour, over a five week period. Started 20th November 2012.

Number of facilitators: 4

Number of Students: 100

St Marys

6th Class Drug Awareness was successfully completed. It was delivered one day a week, for one hour, over a six week period. Started 6th February 2012.

Number of facilitators: 2

Number of Students: 48

St. Dominic's

6th Class Drug Awareness was successfully completed. It was delivered one day a week, for one hour, over a six week period. Started 7th February 2012.

Number of facilitators: 1

Number of participants: 26

Knockmore

6th Class Drug Awareness was successfully completed. It was delivered one day a week, for one hour, over a six week period. Started 7th February 2012.

Number of facilitators: 2

Number of participants: 24

5th Class Community Awareness & Life Skill Programme was successfully completed. It was delivered one day a week, for one hour, over a five week period. Started 14th November 2012.

Number of facilitators: 3

Number of participants: 50

6th Class Drug Awareness was successfully completed. It was delivered one day a week, for one hour, over a six week period. Started 14th November 2012.

Number of facilitators: 3

Number of participants: 50

Caitlin Maude

6th Class Drug Awareness was successfully completed. It was delivered one day a week, for one hour, over a six week period. Started 19th November 2012.

Number of facilitators: 2

Number of participants: 50

Total Number of Primary School Students: 423

Killinarden Community School

Health Awareness Week was successfully completed. It ran from the 23rd to 27th April 2012. KDPPG / WRENS had a one day input on Drug Education and Awareness. We ran a drug awareness quiz which each year and a voucher for the cinema was the prize for each year. It was amazing that only two students (one from 1st year and the other from 2nd year) out of the whole school got the full quiz right.

Total Number of Secondary School Students: 484

Information Stands and parents talks KDPPG provided

The project organised information talks for parents /teachers meetings within local schools.

Aims:

- To provide support and guidance to local parents who request support/information about drugs/alcohol related issues.
- To help parents have open communication with children taking the confirmation pledge.
- To provide trainee teachers with an overview of the partnership, that has developed a best practice approach to drug awareness and up to date drug information through the SPHE School programme.

Work Area 2: Family Support and Adult Programmes

Family support plays a vital role within the project. This involves outreach and one to one confidential support for clients who have become marginalized and isolated in their own homes as a result of their own or family member's criminal/anti-social behaviour.

Following one to one support the clients are encouraged to take part in one of the courses the project provides. These courses provide personal development skills through a number of practical topics. Clients are also referred to other relevant agencies

Another element of the work is providing clients with social skills, health talks, and social mornings/ evenings; this gives the clients a sense of belonging and the opportunity to mix with other adults in an informal way, helping develop their self believe and social skills

In 2012 the project worked with many young people on a one to one basis. Sessions ranged from ten one hour sessions to ongoing support over the year. The goal is to enable young people to manage there own lives as individuals and support them to become more confident in communicating within their families and the wider community.

Below details courses provided by the project, social events and number of clients catered for in 2012:

Wrens Adult Programmes

Family communication

In 2012 WRENS facilitated three different programmes:

- Personal Development Group, which started on 24/01/2012 and ran for 13 weeks.
- Family Support programme, in partnership with YPP link programme, which started on 01/02/2012 and ran for 12 weeks.
- Catherine Lyons Leadership Skills programme, which started on the 28/03/2012 and ran for 11 weeks.

Topics covered included:

Personal Development Skills

Community & Leadership Skills

Drug Education & Prevention

Local & National Drug Services

Crises Intervention

Facilitation Skills

Recognising Stress

Letting go of Stress

Open Support Group

Coping Skills

Dealing with Family Crises

Saying No, with no guilt

It's Ok to do things for myself

Conflict Resolution

Choices / Consequences

SUPPORT

An in house evaluation with clients takes place at the end of each term, clients are encouraged to use the tools they have learnt, and they are supported in knowing they can contact the office.

HOMEVISITS

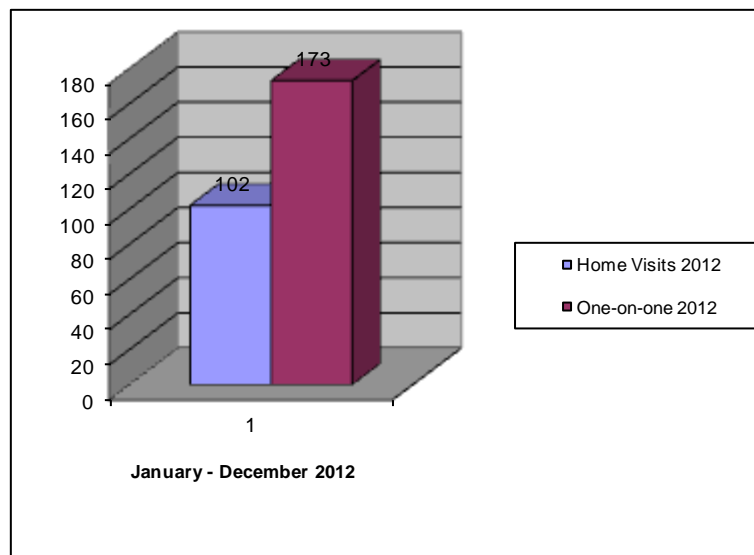
Home visits is a service offered to clients who are isolated or withdrawn from society

The visit is carried out by the client's key worker in the hope that the client builds trust and is supported to attend the project for one to one and group work.

CASE STUDIES

There were a number of case studies carried out in 2012 with families linked in to many other services. This involved interagency meetings to gather all relevant information to support the family in moving forward.

Total Number of Home Visits and One to One Sessions in 2012



Social Events

Service of Hope and Commemoration:

The National Family Support Group held there 14th Service of Hope Commemoration

on the 1st February 2012 in Our Lady of Lourdes Church, Sean McDermott Street . This service is for people affected by deaths from drug abuse. It is the only service in Ireland that is attended by the President, Taoiseach and a representative from the Vatican.

One member of staff and eight clients attended.

Tallaght Hope and Remembrance Service 2012:

This service was organised by SWAN Family Support and was held in Fettercairn Community and Youth Centre. This event happened on the 25th of October 2012.

Two staff members went to each of these events and nine women attending.

National Family Support Network AGM:

The conference is a full day conference and is attended by 300 family support groups nationwide. It took place on the 24th of November 2012.

Three staff and ten clients attended.

Women's Group Yearly Planning Session

Was held in WRENS office, the aim was to involve the group in planning upcoming courses and events for 2012, to address the needs of the group moving forward. Outcomes, enabled WRENS

to plan weekly sessions pitched at the right level to keep the women engaged. Before the group finishes at the end of each term we evaluate all sessions with participants. We encourage them to use the tools they have learnt.

Number of participants: 24

Coffee Morning

Held coffee mornings throughout June, July and August in WRENS office to maintain regular contact and support with the women, to inform them of any course's, workshop's or events they might be interested in attending, it also allows them to keep a bond and support they have with each other outside of the weekly group setting. The women are aware the WRENS is available throughout the summer months should any of them require out reach or one to one support.

Number of participants: 24

Civic Theatre – “Sweet Charity” Women Group

This is a musical that was held in the Civic Theatre and took place on the 28th November 2012. Aim: is to give women a chance to broaden their social perspectives, network and socialise together, many of the women have never experienced the theatre before and were amazed at the sheer enjoyment of it.

Number of participants: 21

Family Outreach Work / One to One Work

Completed 2012

Number of participants

	Probation	WRENS	Total

Adults Outreach:	5	10	15
Adults one to one:	17	15	32
Youth Outreach:	0	0	0
Youth one to one:	1	0	1
Referrals	6	6	12
supported referrals to other services:	2	7	9
Group Work	5	14	19

Referrals to other services

Pieta House, Suicide Crisis Intervention Centre
 1life, 24 Hour Suicide Prevention Helpline
 C.A.R.P Killinarden Drug Treatment Centre
 M.A.B.S
 St. Vincent De Paul
 Belgard Road HSE Alcohol Service,
 Anam Cara Bereavement Support Group
 Bethany Bereavement Support Group
 Domestic Violence Support Services Tallaght
 Alcoholics Anonymous (AA)
 Al-anon
 Narcotics Anonymous (NA)
 Yoda
 FAS
 Institute Technology Tallaght
 Mary Mercer Clinic
 Dolphin House
 SDCC
 SWAN Family Support
 Tallaght Garda Intimidation Team

Work Area 3: Networking & Interagency Work

Introduction

Although networking and Inter agency work can be very time consuming, it is a valuable and worth while part of our community development approach. KDPPG/WRENS are community

representatives in a number of community and national organisations. Through board of managements/committees KDPPG/WRENS provided support and awareness on many community issues and also gained knowledge of National Policy changes that impacts our community.

Networking and Interagency work, has enabled KDPPG/WRENS to work on practical projects in partnership with organisations in the Tallaght area. The approaches enable services to pool skills, resources and ensure a high quality programme of work.

The following section details the committees/boards KDPPG/WRENS attend monthly, agency's and services the project networks with and conference and seminars attended in 2008:

KDPPG/WRENS are represented monthly on the following B.O.M

Committees:

- Tallaght Drugs Task Force Family Support sub Committee
- City Wide Board of Management
- Women Together Tallaght Network Board of Management
- Village Counselling Services Board of Management
- KEEP Steering Committee
- West Tallaght Suicide implementation Group

Summary of Conferences /Seminars/ Services Attended 2012

Month	Host	Conference/Workshop	No of Staff Attending
January			

February	Family Support Network	Service of Hope & Commemoration	3
	City Wide	Launch of Policy Document and film	1
	Lord Mayor	Preventing and Responding to anti-social behaviour.	1
March	City Wide	Pavee Point	1
April	Trinity College	Developing work with sexual abusers – preventing sexual abuse	1
	Killinarden Community School	Health Awareness Week	3
May	St. Dominic's Secondary School	4 th Year Award Ceremony	1
	Dublin Aids Alliance	Prison Working Group	1
	Information Technology Tallaght	20 Year Celebration	1
June	Irish Prison Services	Explore practical measures to reduce the number of ways of coming into contact with the criminal justice system.	1
July	Dodder Valley Partnership	Tallaght Hope and Remembrance Service	2
	Community Response and Dublin Aids Alliance	A Workshop on Hepatitis C for World Hepatitis Day	1
	St. Dominic's Community Response Project	Open Day	1
September	Liberty Hall	Community Against Cuts Control	2
	Jobcare Open day	Trasna Programme, Ex-offenders	2
	Merchants Quay	Launch of Annual review	1
	Louis Fitzgerald Hotel	Intimidation Seminar	1
October	SWAN Family Support	Tallaght Hope and Remembrance Service	2

November	Family Support Network	Responding to Intimidation Seminar	1
	Canals Communities, Mental Health Awareness Campaign	Dual Diagnosis Introduction Workshop Seminar	1
	City Wide	Information Seminar for community drug and rehab projects on children first and upcoming child protection legislation	1
	Merchants Quay	Opening of new Premises	2
	Green Isle Hotel	National Family Support Conference	3
	Civic Theatre	Sweet Charity	4
	City Wide	Drug Crises campaign present multi-agency work with clients who have dual diagnosis	1
December	Rua Red	Dodder Valley Partnership 21 st Birthday	1

Area 4: Organisational Development and Training **Training 2012**

Host /facilitator	Course	Duration	Staff Attended
St. Dominic's	Star Training	1 day	1
Smithfield Probation	Training on Monthly Probation Returns	½ Day	1

St. Andrews Family Resource Centre	Safe Talk	1 Day	1
Brookfield Enterprise Centre	Putting Pieces Together	1 Day	1
Safe Talk	Suicide Awareness	½ day	3
Family Support Network	Information Day on good practice guidelines for peer led family support groups	1 Day	1
Tallaght Leisure Centre	Tallaght Community Health Fair	½ Day	1
T.R.P	Awareness and Information sharing of education opportunities for many people with regard to sexual health, relationships and related issues	½ Day	1
Angel Reading and Reiki	Meditation	1 Day	1
Family Support Network	Equality and diversity, training and education	1 Day	1
Healthy Living	Women's Health Awareness	½ day	1
	Restorative Justice Training	1 Day	1
NUI Maynooth	Youth Justice Certificate	Part time course 1 night a week for the academic year	1

KDPPG Funding

Killinarden Drug Primary Prevention Group (KDPPG) is funded through VEC Co Dublin Educational Committee in partnership with LDTF. This covers all running costs for the project.

VEC Co Dublin Educational Committee in partnership with LDTF €57,980.00

Detailed Income & Expenditure for the period ended 31st of December 2012

INCOME

Co. Dublin VEC	57,980.00
Other Income	<u>440.00</u>
	58,420.00

EXPENDITURE

Staff Salaries	45,094.00
Paye/Prsi	4,900.00
Facilitators/Tutors Fees	3,756.00
Allocated Management Fee	(10,000.00)
Rent & Insurance	10,068.00
Printing/stationery/post	20.00
Telephone	1,390.00
Travel & Subsistence	0.00
Office Expenses	687.00
Legal & Professional Fees	964.00
Bank & Interest Charges	253.00
Audit Fee	1,338.00
	<u>58,470.00</u>
Deficit of Income over expenditure	(50.00)

WRENS Funding

Women Reviewing Equality Networking Standards (WRENS) is funded through the Probation Service, Department of Justice. This covers all running costs for the project.

Probation & Welfare Services	€90,250.00
---	-------------------

Detailed Income & Expenditure for the period ended 31st of December 2012

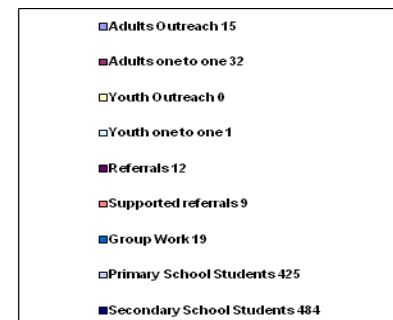
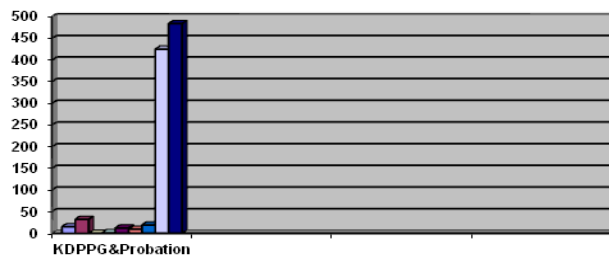
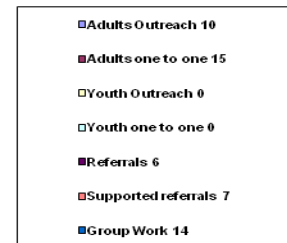
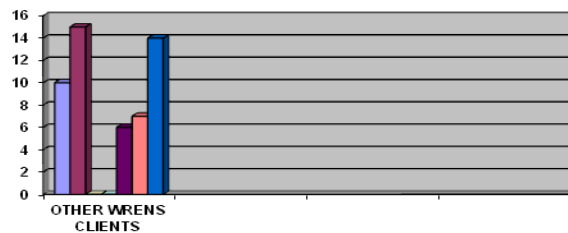
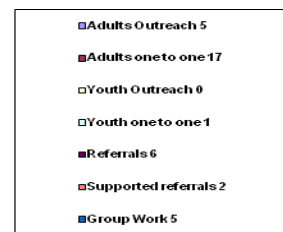
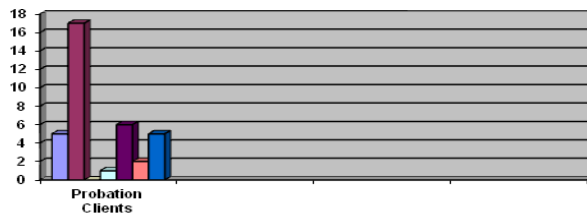
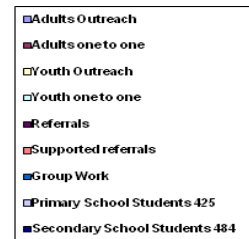
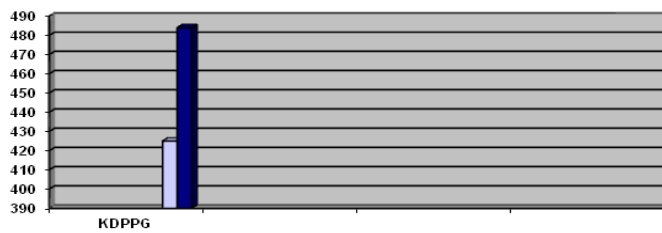
INCOME

Probation & Welfare Service Income	90,250.00
Other Income	<u>846.00</u>
	91,096.00

EXPENDITURE

Staff Salaries	62,366.00
Employer's PRSI contributions	6,671.00
Rent & Insurance	1,637.00
Telephone	1,084.00
Travel & Subsistence	578.00
Management Costs	10,000.00
Printing, postage and stationery	2,585.00
Bank & Interest Charges	62.00
Office expenses	2,200.00
General expenses	140.00
Legal and professional fees	1,578.00
Audit Fee	1,338.00
	<u>90,839.00</u>
Surplus income over expenditure	257.00

NUMBER OF PARTICIPANTS FOR 2012



Total number of probation clients 2012 = 18 / 17 female / 1 male

Total number of wrens clients 2012 = 19

Total number of KDPPG clients 2012 = 909

Conclusion

Regardless of KDPPG's funding difficulties the project successfully completed the strategic business plan.

On behalf of the Board we wish to extend our sincere Thanks to all the staff. The importance of us working as a team to achieve our goal was helped greatly by the spirit of co-operation that exists among the staff members. Thanks to Margaret Murray, Sinead Mahon, Mandy Scully and Alice Murray - their constant good cheer, hard work, flexibility, willingness to go the extra mile time and time again has facilitated the success of our service.

Having said that and despite all, we still continue to provide an excellent service both professionally and at a personal level as we help support the aims of our funders.

The Board of Directors/Management Committee, extend their sincere thanks to the following

- The Probation Services
- VEC Co. Dublin committee in Partnership with LDTF
- Tallaght Local Drugs Task Force
- Project Auditors
- FAS
- Five people on Work Experience